

Business Expectations Survey (BES) Snapshot — March 2026



KEY FINDINGS

OVERALL PERFORMANCE

- Majority of businesses report performing better than six months ago and expect to further improve.
- Agriculture records strongest recent growth. Industry expects increase in growth in the next 6 months. Services record stable performance.
- Overall business report current and expected net performance of 56% and 76% respectively.

SALES

Positive across sectors. Services show the strongest performance, while agriculture softens slightly and industry expects stronger demand ahead.

EMPLOYMENT

Employment growth continues across all sectors but is expected to grow slower, especially in agriculture.

CAPITAL INVESTMENT

Investment remains positive but is expected to moderate, particularly in agriculture and industry, while services stay relatively stable.

PRICES

Moderate price increases expected overall, with easing pressures in agriculture, rising pressures in industry, and stable trends in services.

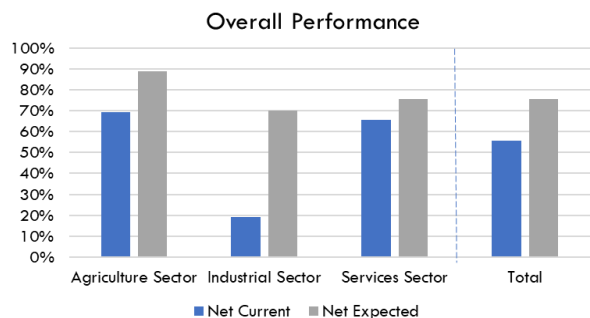
INTERNATIONAL TRADE

- Export expectations improve.
- Imports expectations slightly moderate.

RISKS & OPPORTUNITIES

- Natural disasters identified as the most significant risk.
- Fuel Price and Currency Movement show mixed perceptions.

Sample: 119 businesses interviewed in Port Vila & Luganville.



Attributes & Challenges

| | | | |
|--|----------------------|--|---------------------|
| | Supportive workforce | | Operating Costs |
| | Location of Business | | Access to Transport |
| | Customer Demand | | Labor Issues |

Key Explanatory Note:

- The Net % is explained as:
 - A value between 0 and 50% indicates that more businesses report an improvement in performance.
 - A value of 0% indicates no overall change in performance.
 - A value between 0 and -50% indicates that more businesses report a decline in performance.
- The survey is conducted on a bi-annual basis.
- The Attributes & Challenges represent the 3 most selected options.

MAIN BUSINESS INDICATORS Grey = Current (Sep 2025–Mar 2026) Blue = Expected (Mar–Sep 2026)

